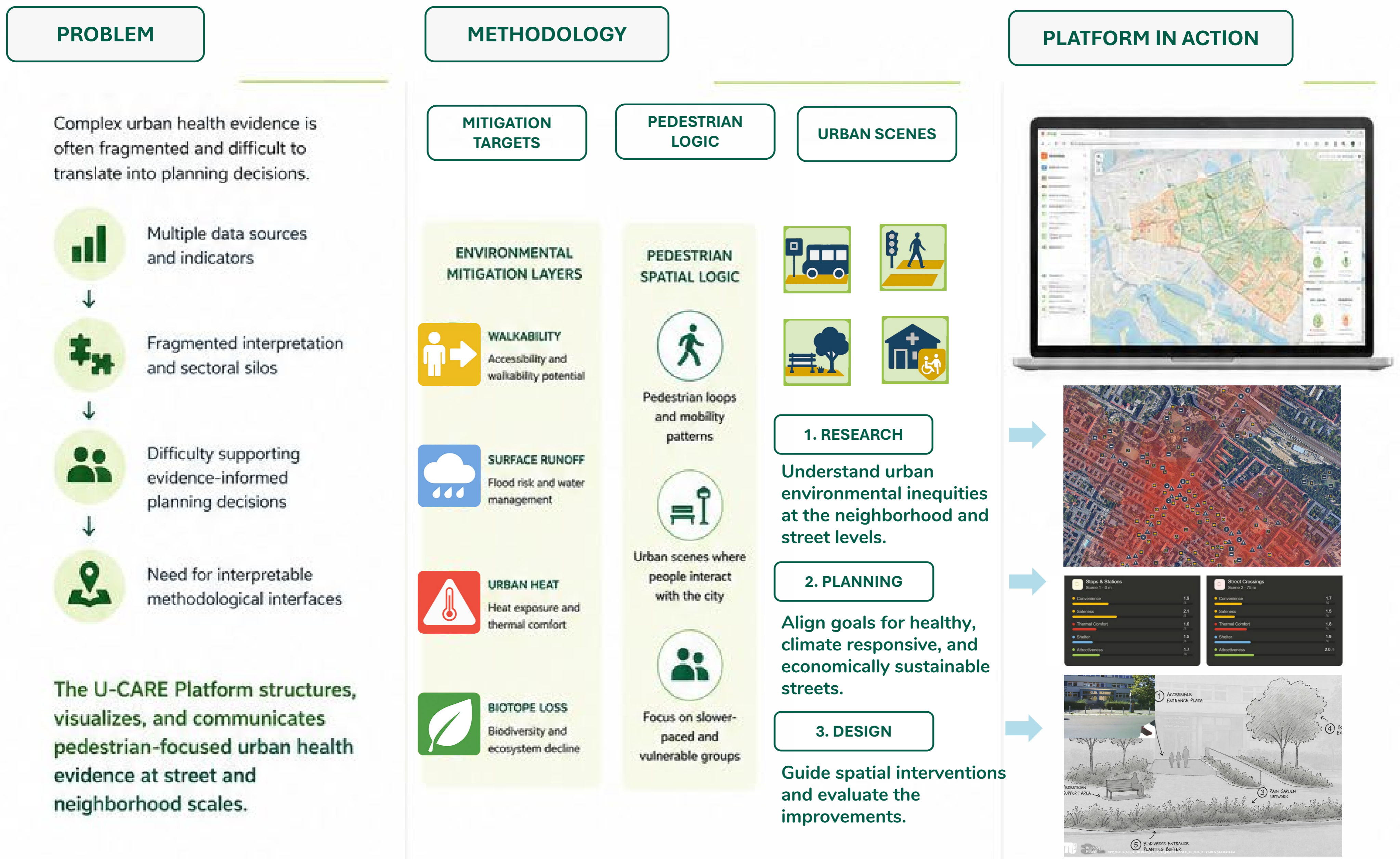




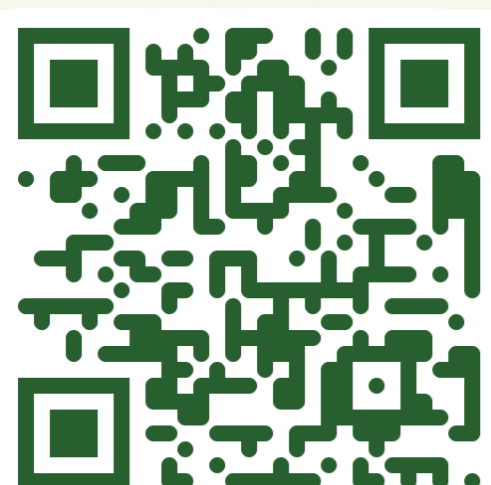
## The U-CARE Platform as Methodological Interface for Pedestrian-focused Planning

Alvaro Valera Sosa<sup>1</sup> Göran Lindahl<sup>2</sup>

<sup>1</sup> Building Health Lab | <sup>2</sup> Chalmers University of Technology



### CONFERENCE-BASED EVALUATION STRATEGY



#### TEST THE PLATFORM AND SHARE YOUR FEEDBACK!

Your input will help improve the U-CARE Platform and support evidence-based pedestrian-focused planning.

[ucare.solutions/demo](https://ucare.solutions/demo)

### WHAT WE EVALUATE

- Usability & Navigation**  
Clarity of structure, workflows and activities
- Visualizations**  
Readability and understandability of maps, layers and infocards
- Layer Integration**  
Understandability of thematic data integration (walkability, runoff, heat, biotope loss)
- Spatial Logic**  
Usefulness of pedestrian loops and urban scenes to understand spatial variation
- Professional Relevance**  
Perceived applicability in professional or academic practice

“

Methodological digital interfaces can support urban health-oriented planning by transforming complex spatial evidence into interpretable pedestrian-focused reasoning environments.

